



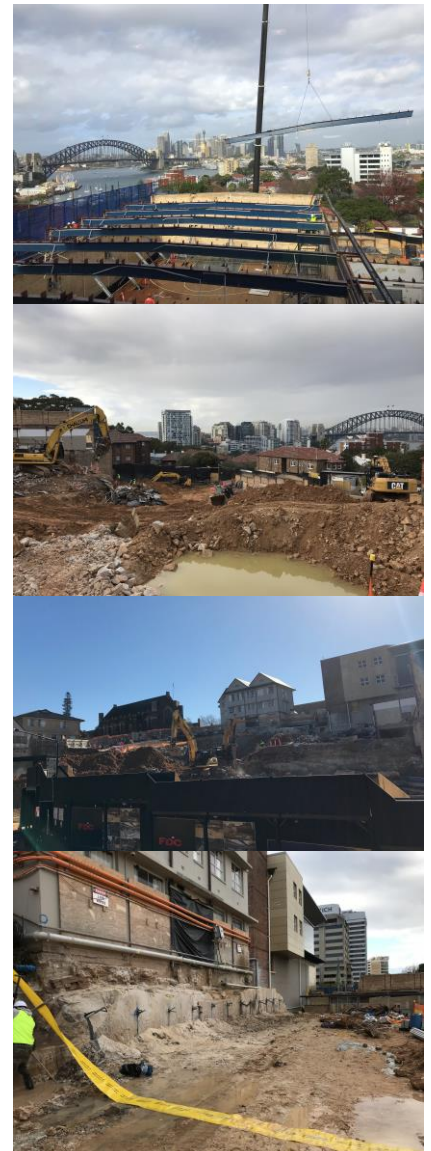
COMMUNITY NOTIFICATION

2 JULY 2018

Shore Physical Education Centre Development Update

Current Status

- The demolition of the gymnasium is nearing completion.
- Bulk excavation works are continuing.
- Truck movements associated with the removal of materials from demolition and excavation activities are ongoing.
- A Work Zone for the demolition and construction activities for SPEC, is now in place along William Street and Hunter Crescent. The existing parking zones have been removed during the construction working hours of the project. These temporary parking changes will remain in place **until November 2019**.
- A temporary No Stopping Zone has been installed along William Street and will remain in place during the construction working hours of the project.
- These changes were approved by North Sydney Council on 4 May 2018, https://www.northsydney.nsw.gov.au/Council_Meetings/Meetings/Committees/Traffic_Committee/4_May_2018
Council signage is in place and the changes will be monitored for compliance by Council.
- Access to properties during these changes will not be affected and through traffic will be maintained along these streets.
- FDC are continuing to comply with the acoustic requirements and mitigation measures as stipulated in the Construction Noise and Vibration Management Plan for the project.
- Approved working hours for this project are; Monday to Friday 7am to 6pm, and Saturday 8am to 1pm. Works may be undertaken outside of these hours, as required, provided the relevant authority approvals are in place.



Next Steps

- Delivery and installation of crane equipment is planned for October/November 2018.